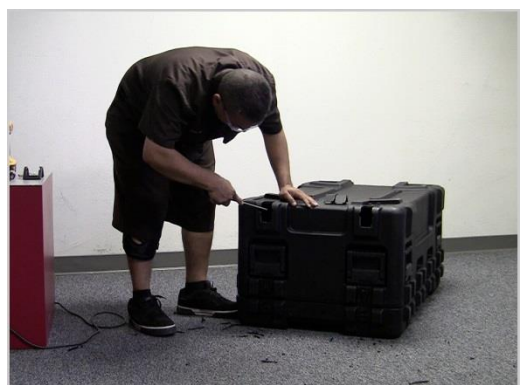
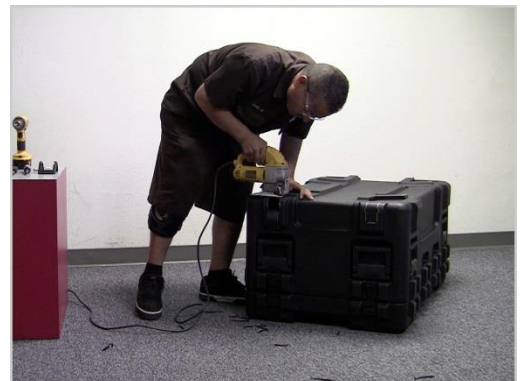
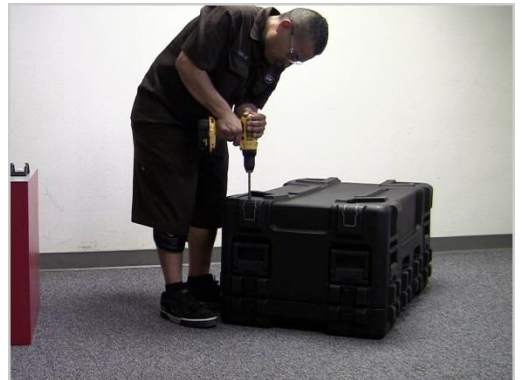


3R-WK12 Wheel Kit Installation Instructions

1. Use cutout template to mark case. Note that the longer leg of the wheel housing is designed to run vertically on the side of the case, and the shorter leg should run horizontally along the bottom of the case.
2. Use a 3/8" drill bit to drill holes through the case in the corners of the cutouts making sure to drill just inside of the marked lines.
3. Use a jigsaw to cut out the case corners where the wheel is to be mounted. Make your cut so that you are just removing the line that you marked on the case.
4. Use a file to debur all of the cut edges and remove any of the remaining line that you could not cut out with the jigsaw.
5. Test fit the wheel assembly in the hole that you just cut. Make adjustments as necessary to ensure that the wheel assembly fits properly into the case.



6. Remove the paper backing of the adhesive side of the gasket and then apply the gasket to the back side of the wheel housing.

7. Inert the wheel housing back into the case and then using a 3/16" drill bit drill out the 4 holes for the mounting hardware.

8. Apply a good sealing bead of silicone sealant to the exposed side of the gasket along the inside edge. This will ensure that the case will continue to be water tight after this modification.

9. Insert the wheel back into the case and secure with the mounting hardware. If the holes are not lining up exactly you can use a drift to align them, or simply run the drill bit back through them one at a time, installing the mounting screw before going to the next hole.

10. Complete the installation by placing the rubber backed sealing washer with the rubber side towards the case surface, and then install and tighten the nylock nut.

**Please view the instructional video if needed at:
www.skbcases.com/videos/3RWK12-install**

