



# Selected **SPECIAL** collection

Discover our popular 3i series



# The best cases, **EXCELLENT CONDITIONS** and outstanding service

At SKB, we are always committed to offering our dealers the best price, conditions and quality. Keeping our commitments and providing a high level of service are two of our most important core values. To live by those values and continue to do so, we must be resilient, flexible and creative. We are therefore constantly examining how we can anticipate external challenges and what opportunities they present.

In this day and age, external factors are pressuring our delivery times, costs and service levels. We have therefore decided to focus on a range of 27 fast movers. In this way we are less dependent on and vulnerable to external developments and we can continue to offer you as a dealer the continuity and service you expect from us.





## This is the case...

### 27 SPECIALS

Our new core range includes 27 of our most popular models. These basic models are available from stock, directly from our European warehouse. The advantages? We remain to offer a stable price-quality ratio and you can always count on quick order handling and delivery. Do you have a specific case size in mind? No problem, our packaging experts will be happy to inform you which one of our 27 specials is the perfect alternative.

### ADDITIONAL COLLECTION

Is there no suitable alternative available within our core range of 27 specials? – for example when you need a case with specific dimensions – your order will be placed and if it is not in stock in our European warehouse, it will be produced in the SKB factory in the USA. We will inform you as soon as possible about the expected delivery time.



## These are your benefits

- Continuity, regardless of external factors
- 27 specials available from stock
- Good price-quality ratio
- Maintain a high level of service
- Keep transport costs under control
- Lower environmental impact through efficiency

# Selected SPECIAL collection

## 3i-series - Selected Collection

Model #	Inside dimensions (LxWxH - mm)	Outside dimensions (LxWxH - mm)	Base depth	Lid depth	Weight empty (kg)	Additional collection			
						Pull handle/ wheels	Padded dividers	Cubed foam	Layered foam
3i-0907-4	241 x 187 x 105	273 x 246 x 122	75	30	1,1		•	•	•
3i-0907-6	238 x 187 x 156	271 x 246 x 173	125	30	1,3		•	•	•
3i-1209-4	305 x 229 x 114	335 x 282 x 132	76	38	1,4		•	•	•
3i-1309-6	343 x 241 x 165	374 x 303 x 186	127	38	2,2		•	•	
3i-1510-6	381 x 267 x 152	413 x 329 x 172	109	43	2,4		•	•	•
3i-1610-5	406 x 254 x 140	436 x 309 x 158	89	51	2,4		•	•	•
3i-1711-6	432 x 292 x 156	454 x 355 x 177	110	47	2,7		•	•	•
3i-1813-5	470 x 330 x 122	500 x 393 x 142	83	39	2,6		•	•	•
3i-1813-7	470 x 331 x 179	503 x 394 x 200	141	39	3,5		•	•	
3i-1914N-8	483 x 368 x 203	514 x 430 x 223	152	51	3,7		•	•	
3i-2011-8	521 x 293 x 210	557 x 355 x 229	159	51	3,6		•	•	
3i-2015-7	521 x 394 x 192	566 x 457 x 211	141	51	4,2		•	•	
3i-2015-10	521 x 394 x 256	582 x 457 x 293	203	52	6,5	•	•	•	
3i-2213-12	559 x 330 x 305	621 x 391 x 347	254	51	7,4	•		•	
3i-2217-8	559 x 432 x 203	618 x 495 x 225	152	51	5		•	•	
3i-2217-10	559 x 439 x 270	622 x 492 x 310	219	51	7,9	•	•	•	
3i-2217-12	559 x 432 x 324	618 x 495 x 365	273	51	8,4	•	•	•	
3i-2317-14	584 x 432 x 356	650 x 495 x 398	292	51	9,4	•		•	
3i-2421-7	613 x 533 x 178	666 x 597 x 220	127	51	8,6	•		•	
3i-2424-14	610 x 610 x 356	673 x 674 x 398	305	51	11,5	•		•	
3i-2918-10	737 x 457 x 276	801 x 521 x 318	225	51	10	•	•	•	
3i-2918-14	737 x 457 x 356	801 x 521 x 399	292	64	11	•		•	
3i-2922-16	737 x 559 x 406	811 x 623 x 429	356	51	12,8	•		•	
3i-3021-18	762 x 533 x 457	837 x 598 x 479	406	51	13,6	•		•	
3i-3026-15	781 x 660 x 394	856 x 725 x 416	343	51	14,3	•		•	
3i-4213-12	1080 x 343 x 309	1156 x 407 x 329	258	51	10,4	•			•
3i-5014-6	1283 x 368 x 152	1347 x 431 x 174	114	38	8,5	•			•

TO ORDER PLEASE CONTACT YOUR SKB SALES REPRESENTATIVE.

## CHECK OUT THE FEATURES OF OUR 3i SERIES

SKB cases from our 3i series stand out in harsh environments and are suitable for the most demanding applications. In fact, they are built for it! Water- and dustproof, easy to stack and indestructible. Hence our lifetime warranty. Check out more features below!

### Pressure equalization valve

Allows the case to 'breathe freely' and equalize pressure caused by altitude or temperature. It keeps water molecules out, even when held under water.

### Watertight & dustproof

Designed with an edge to edge construction and O-ring seal to achieve a watertight and dustproof\* (IP-67) case. (\*3i-0702 model = waterproof IP54)

### Ultimate impact strength

Polypropylene co-polymer provides unsurpassed protection and is light-weight as well as indestructibly strong.

### Patented trigger latches

Stay tightly closed until you decide to open them. The latches are easy to open with just one finger or even when wearing thick gloves. (TSA accepted models available).



### Reinforced padlock

Allows the use of standard-size padlock for additional security. SKB TSA padlocks are available.

### Easy to stack

Secure interlocking features ensure stable stacking on uneven surfaces.

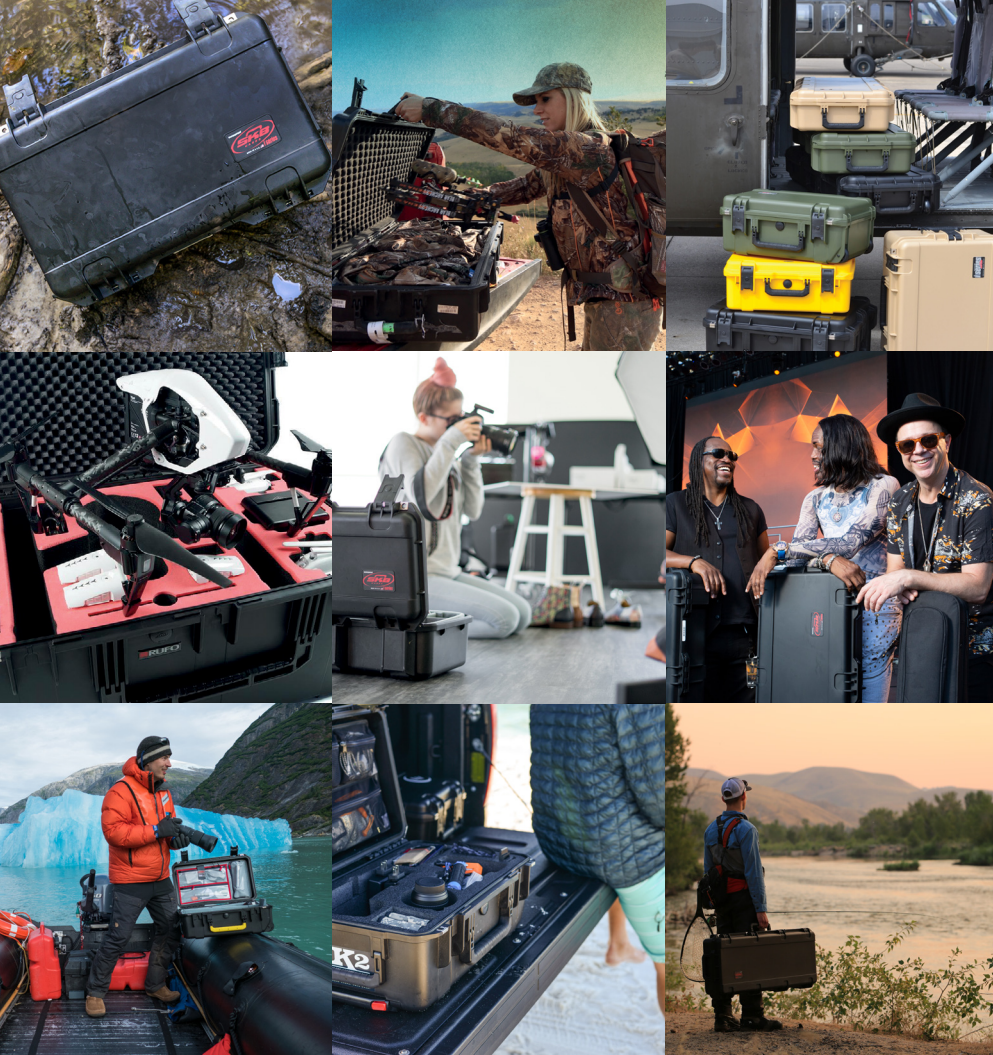
### 'Inline skate' wheels

Smooth-running wheels ('inline skate style') with factory lubricated, sealed ball bearings, ensure trouble free, quiet movement.

### Handles

Flush snap-down overmolded handles allows a 'two-man-lift' on large and heavy cases. Cushion grip overmold material reduces hand fatigue. Handles available in several colors.





- **Best price**  
Contact our SKB team for our up-to-date pricelist
- **Lifetime warranty**  
You break it, we replace it!  
Warranted for life against defects and craftsmanship
- **Tougher, better, stronger**  
Impact tests have proven our cases are 2.8 times as strong as our competitor's
- **Compliant to standard:**  
IP67, ATA300, DEF STAN 81-41, STANAG 4280, MIL-Std 810G, MIL-C41501, MIL Std 2073
- **Lightweight**  
Injection Molded, Polypropylene Co-Polymer is strong but lightweight
- **Many sizes**  
Check out the 27 specials and choose your size
- **Interior options**  
Empty, cubed, padded dividers and layered and/or custom foam
- **Easy-to-open latches**  
Cases can be opened easily and quickly, even when you're short of hands
- **Variety of options**  
Latches, (pull) handles, hinges, wheels - field replaceable
- **Travel security**  
TSA locks are available, to ensure safe and easy transportation and airport access

## INTERIOR

SKB iSeries cases have only one goal: to protect your equipment to the maximum, no matter the size, shape or use. Interior options on most models include:

- **layered foam:** put your equipment on top of the foam,
- **cubed foam:** trace your equipment and pluck away pre-cut foam cubes,
- **padded dividers:** easily adjust and re-connect nylon walls with velcro,
- **or an empty interior.**

The iSeries cases also feature a high quality PE form-cut foam interior to accommodate any style of equipment. Don't underestimate the preset foam interiors SKB offers you! All options can be found on our website [www.skb-europe.com](http://www.skb-europe.com).



Empty



Form-cut foam



Layered foam



Cubed foam



Dividers







There is an  
**i-SERIES CASE**  
for everything

## Accessories

### Colored handles

If you own multiple iSeries cases, you can add colored handles to code your contents. They are also great for marking checked cases when traveling.



Model #	Description
3i-HD73-BE	Small replaceable handle, Blue
3i-HD73-YW	Small replaceable handle, Yellow
3i-HD73-RD	Small replaceable handle, Red
3i-HD73-GN	Small replaceable handle, Green
3i-HD80-BE	Medium replaceable handle, Blue
3i-HD80-YW	Medium replaceable handle, Yellow
3i-HD80-RD	Medium replaceable handle, Red
3i-HD80-GN	Medium replaceable handle, Green
3i-HD81-BE	Large replaceable handle, Blue
3i-HD81-YW	Large replaceable handle, Yellow
3i-HD81-RD	Large replaceable handle, Red
3i-HD81-GN	Large replaceable handle, Green

### TSA Locking Latches

Transport Security Administration (TSA) baggage screeners are trained to recognize the Travel Sentry logo on TSA-accepted locks, which allows them to open, inspect and relock your case.



Model #	Description
3i-TSA-1	3i-0907-4, 3i-0907-6
3i-TSA-2	3i-1209-4, 3i-1711-6, 3i-1813-5
3i-TSA-3	Fits all other models



### TSA Locks

SKB's TSA-accepted locks (2 pcs) allow you to set your own combination and are easily recognizable by TSA screeners.

Model #	Description
1SKB-PDL	TSA Accepted Padlock
1SKB-PDL-C	TSA Accepted Cable lock

### Panel mount kit

The 3i-PMCK Kit will secure a mounting panel of your choice for a convenient and finished appearance. The kit includes 8 panel mounts with brass inserts, o-ring seals, a drill guide and drill bit, and universal mounting screws to fit iSeries cases.



# Additional collection

Haven't found a suitable case that fits your needs within our **27 special range**? Check out our additional collection. Please contact us if you have any questions about the specifications, delivery times, optional accessories or stock alternatives.

Model #	Inside dimensions (LxWxH - mm)	Outside dimensions (LxWxH - mm)	Base depth	Lid depth	Weight empty (kg)	Pull handle/ wheels	Padded dividers	Cubed foam	Layered foam
3i-0702-1	197 x 55 x 33	219 x 80 x 40	17	17	0.2				•
3i-0705-3	191 x 127 x 83	212 x 170 x 97	70	13	0.5			•	
3i-0806-3	216 x 152 x 95	239 x 199 x 111	83	13	0.7			•	
<b>3i-0907-4</b>	<b>241 x 187 x 105</b>	<b>273 x 246 x 122</b>	<b>75</b>	<b>30</b>	<b>1.1</b>			•	•
<b>3i-0907-6</b>	<b>238 x 187 x 156</b>	<b>271 x 246 x 173</b>	<b>125</b>	<b>30</b>	<b>1.3</b>		•	•	•
3i-1006-3	273 x 156 x 83	298 x 203 x 98	70	13	0.9			•	
3i-1208-3	305 x 203 x 83	327 x 246 x 97	70	13	1.0			•	
<b>3i-1209-4</b>	<b>305 x 229 x 114</b>	<b>335 x 282 x 132</b>	<b>76</b>	<b>38</b>	<b>1.4</b>		•	•	•
<b>3i-1309-6</b>	<b>343 x 241 x 165</b>	<b>374 x 303 x 186</b>	<b>127</b>	<b>38</b>	<b>2.2</b>		•	•	•
3i-1510-4	381 x 267 x 114	413 x 330 x 135	94	41	2.1			•	
<b>3i-1510-6</b>	<b>381 x 267 x 152</b>	<b>413 x 329 x 172</b>	<b>109</b>	<b>43</b>	<b>2.4</b>		•	•	•
3i-1510-9	381 x 267 x 229	413 x 330 x 249	184	44	2.8		•	•	
3i-1515-6	381 x 381 x 165	445 x 447 x 186	114	51	3.3			•	
<b>3i-1610-5</b>	<b>406 x 254 x 140</b>	<b>436 x 309 x 158</b>	<b>89</b>	<b>51</b>	<b>2.4</b>		•	•	•
3i-1610-10	406 x 254 x 254	441 x 319 x 297	228	69	3.3			•	
3i-1706-6	432 x 165 x 165	462 x 228 x 185	114	51	2.2			•	
<b>3i-1711-6</b>	<b>432 x 292 x 156</b>	<b>454 x 355 x 177</b>	<b>110</b>	<b>47</b>	<b>2.7</b>		•	•	•
3i-1717-10	432 x 432 x 254	495 x 500 x 277	203	51	4.8			•	
3i-1717-16	432 x 432 x 406	494 x 498 x 428	356	51	6.3			•	
<b>3i-1813-5</b>	<b>470 x 330 x 122</b>	<b>500 x 393 x 142</b>	<b>83</b>	<b>39</b>	<b>2.6</b>		•	•	•
<b>3i-1813-7</b>	<b>470 x 331 x 179</b>	<b>503 x 394 x 200</b>	<b>141</b>	<b>39</b>	<b>3.5</b>		•	•	•
<b>3i-1914N-8</b>	<b>483 x 368 x 203</b>	<b>514 x 430 x 223</b>	<b>152</b>	<b>51</b>	<b>3.7</b>		•	•	•
3i-1914-8	483 x 369 x 204	514 x 430 x 223	152	51	6.0	•	•	•	•
3i-2011-7	521 x 293 x 191	556 x 355 x 229	138	53	5.1	•	•	•	•
<b>3i-2011-8</b>	<b>521 x 293 x 210</b>	<b>557 x 355 x 229</b>	<b>159</b>	<b>51</b>	<b>3.6</b>		•	•	•
3i-2011-10	508 x 292 x 268	559 x 356 x 305	216	52	5.8	•		•	
<b>3i-2015-7</b>	<b>521 x 394 x 192</b>	<b>566 x 457 x 211</b>	<b>141</b>	<b>51</b>	<b>4.2</b>		•	•	•
<b>3i-2015-10</b>	<b>521 x 394 x 256</b>	<b>582 x 457 x 293</b>	<b>203</b>	<b>52</b>	<b>6.5</b>	•	•	•	•
3i-2015-14	521 x 394 x 356	586 x 458 x 395	305	51	7.6	•		•	
<b>3i-2213-12</b>	<b>559 x 330 x 305</b>	<b>621 x 391 x 347</b>	<b>254</b>	<b>51</b>	<b>7.4</b>	•	•	•	•
3i-2215-8	559 x 394 x 203	624 x 457 x 245	203	51	7.3	•		•	
<b>3i-2217-8</b>	<b>559 x 432 x 203</b>	<b>618 x 495 x 225</b>	<b>152</b>	<b>51</b>	<b>5.0</b>		•	•	•
<b>3i-2217-10</b>	<b>559 x 439 x 270</b>	<b>622 x 492 x 310</b>	<b>219</b>	<b>51</b>	<b>7.9</b>	•	•	•	•
<b>3i-2217-12</b>	<b>559 x 432 x 324</b>	<b>618 x 495 x 365</b>	<b>273</b>	<b>51</b>	<b>8.4</b>	•	•	•	•
3i-2222-12	572 x 572 x 318	630 x 634 x 359	266	51	9.9	•	•	•	•
<b>3i-2317-14</b>	<b>584 x 432 x 356</b>	<b>650 x 495 x 398</b>	<b>292</b>	<b>51</b>	<b>9.4</b>	•	•	•	•
3i-2418-16	610 x 457 x 406	675 x 522 x 448	356	51	10.1	•		•	
<b>3i-2421-7</b>	<b>613 x 533 x 178</b>	<b>666 x 597 x 220</b>	<b>127</b>	<b>51</b>	<b>8.6</b>	•	•	•	•
3i-2424-10	610 x 610 x 254	673 x 675 x 296	203	51	10.7	•		•	
<b>3i-2424-14</b>	<b>610 x 610 x 356</b>	<b>673 x 674 x 398</b>	<b>305</b>	<b>51</b>	<b>11.5</b>	•	•	•	•
3i-2615-10	660 x 381 x 254	726 x 446 x 296	203	51	8.6	•		•	
3i-2617-12	662 x 445 x 305	676 x 508 x 347	254	51	9.5	•	•	•	•
3i-2620-13	660 x 508 x 330	726 x 573 x 372	279	51	TBA	•		•	
3i-2914-15	737 x 356 x 381	815 x 424 x 403	330	51	9.2	•		•	
<b>3i-2918-10</b>	<b>737 x 457 x 276</b>	<b>801 x 521 x 318</b>	<b>225</b>	<b>51</b>	<b>10.0</b>	•	•	•	•
<b>3i-2918-14</b>	<b>737 x 457 x 356</b>	<b>801 x 521 x 399</b>	<b>292</b>	<b>64</b>	<b>11.0</b>	•	•	•	•
3i-2922-10	737 x 559 x 267	806 x 625 x 309	216	51	12.2	•		•	
<b>3i-2922-16</b>	<b>737 x 559 x 406</b>	<b>811 x 623 x 429</b>	<b>356</b>	<b>51</b>	<b>12.8</b>	•	•	•	•
3i-3016-10	762 x 406 x 254	823 x 470 x 276	203	51	8.0	•		•	
3i-3019-12	775 x 495 x 305	849 x 560 x 327	254	51	10.7	•		•	
<b>3i-3021-18</b>	<b>762 x 533 x 457</b>	<b>837 x 598 x 479</b>	<b>406</b>	<b>51</b>	<b>13.6</b>	•	•	•	•
<b>3i-3026-15</b>	<b>781 x 660 x 394</b>	<b>856 x 725 x 416</b>	<b>343</b>	<b>51</b>	<b>14.3</b>	•	•	•	•
3i-3424-12	876 x 622 x 324	951 x 687 x 346	273	51	13.6	•		•	
3i-3613-12	914 x 343 x 305	982 x 408 x 326	254	51	9.2	•	•	•	•
3i-3614-6	927 x 368 x 152	992 x 427 x 174	114	38	7.0	•		•	
3i-3913-12	998 x 345 x 322	1067 x 406 x 356	271	51	10.1	•		•	
<b>3i-4213-12</b>	<b>1080 x 343 x 309</b>	<b>1156 x 407 x 329</b>	<b>258</b>	<b>51</b>	<b>10.4</b>	•	•	•	•
3i-4214-5	1080 x 368 x 140	1142 x 431 x 161	102	38	7.5	•		•	
3i-4217-7	1080 x 432 x 191	1146 x 494 x 212	139	52	9.3	•		•	
3i-4414-10	1130 x 368 x 254	1194 x 432 x 275	203	51	10.4	•	•	•	•
3i-4719-8	1194 x 483 x 203	1261 x 546 x 225	152	51	10.9	•		•	
3i-4909-5	1245 x 229 x 127	1279 x 293 x 148	89	38	5.7	•		•	
<b>3i-5014-6</b>	<b>1283 x 368 x 152</b>	<b>1347 x 431 x 174</b>	<b>114</b>	<b>38</b>	<b>8.5</b>	•	•	•	•
3i-5616-9	1422 x 406 x 229	1491 x 471 x 270	178	51	12.9	•		•	
3i-6018-8	1524 x 457 x 203	1593 x 524 x 245	152	51	13.0	•		•	

Meet the other product lines of SKB @ [skb-europe.com](http://skb-europe.com)

Hamelendijk 2 • 5541 RA Reusel • Netherlands • T +31(0)88 0234 600 • [sales@skb-europe.com](mailto:sales@skb-europe.com)

